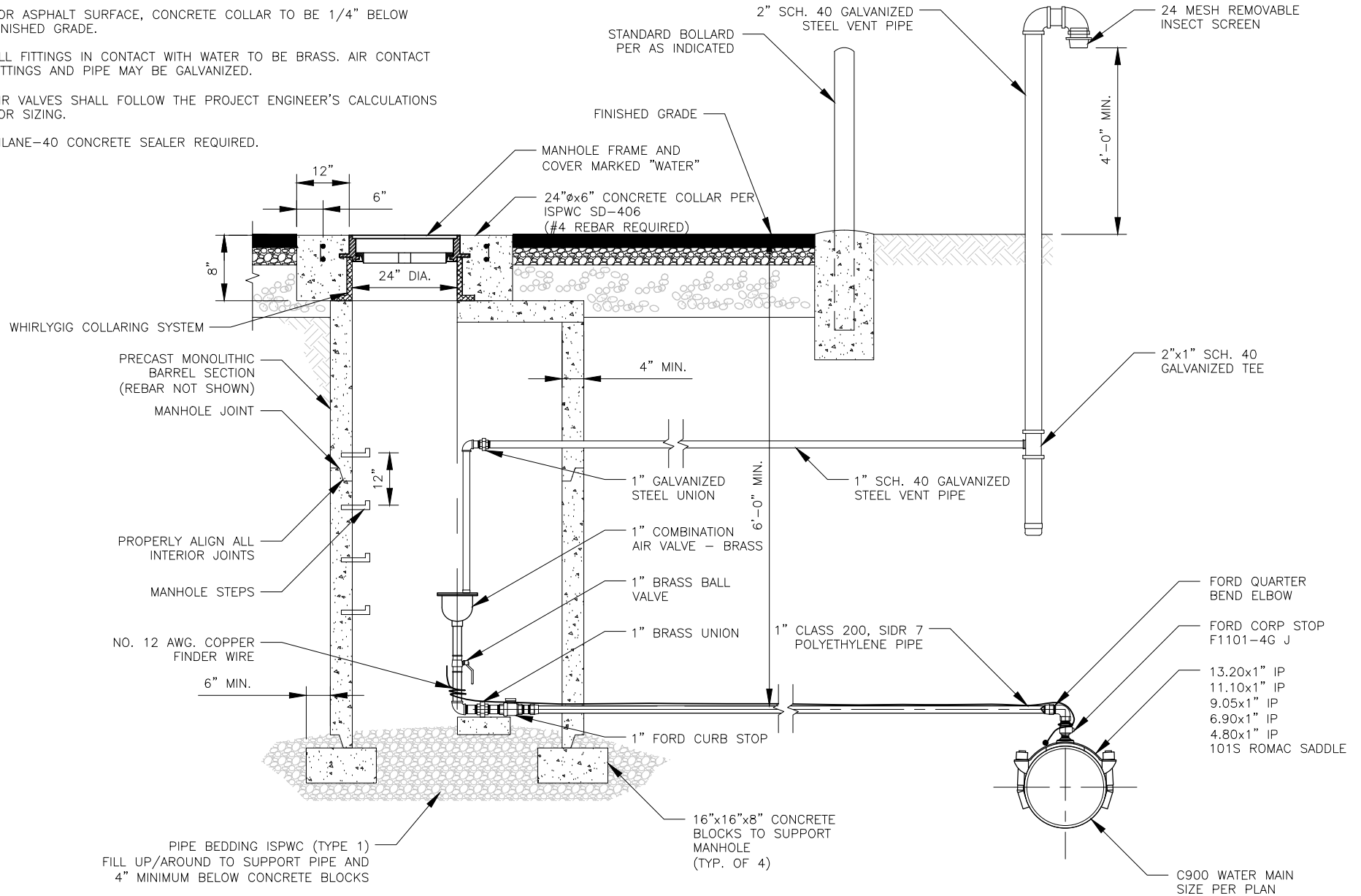



NOTES:

1. FOR ASPHALT SURFACE, CONCRETE COLLAR TO BE 1/4" BELOW FINISHED GRADE.
2. ALL FITTINGS IN CONTACT WITH WATER TO BE BRASS. AIR CONTACT FITTINGS AND PIPE MAY BE GALVANIZED.
3. AIR VALVES SHALL FOLLOW THE PROJECT ENGINEER'S CALCULATIONS FOR SIZING.
4. SILANE-40 CONCRETE SEALER REQUIRED.



 City of McCall PUBLIC WORKS	PUBLIC WORKS DEPARTMENT 815 N. SAMSON TRAIL McCALL, IDAHO 83638 208.634.5580	CITY OF McCALL AIR/VACUUM RELEASE VALVE		STANDARD DRAWING NO. MSD-410
		PROJECT . DATE 1/12/2023	DRAWN BY . SHEET NO. 1 OF 1	